

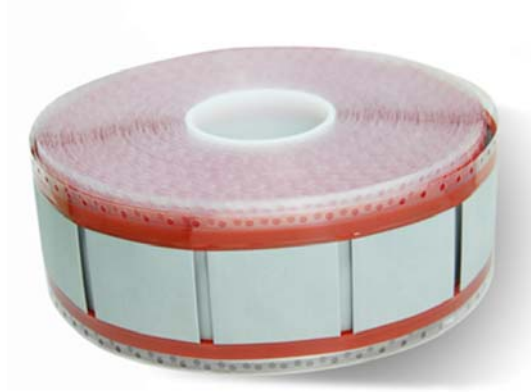
BH-HMS

High temperature and oil resistant heat shrink identification marker Sleeve

Features/Applications:

BH-HMS high temperature oil resistant heat shrink identification sleeve is made of cross-linked environmentally friendly polyolefin bombarded by high power electron beam with electronic accelerators to meet high end markets where highly reliable cable& wire identification is required. Which are used to identify wires and cables where exposure to organic fluids, especially oils, for long periods at elevated temperatures.

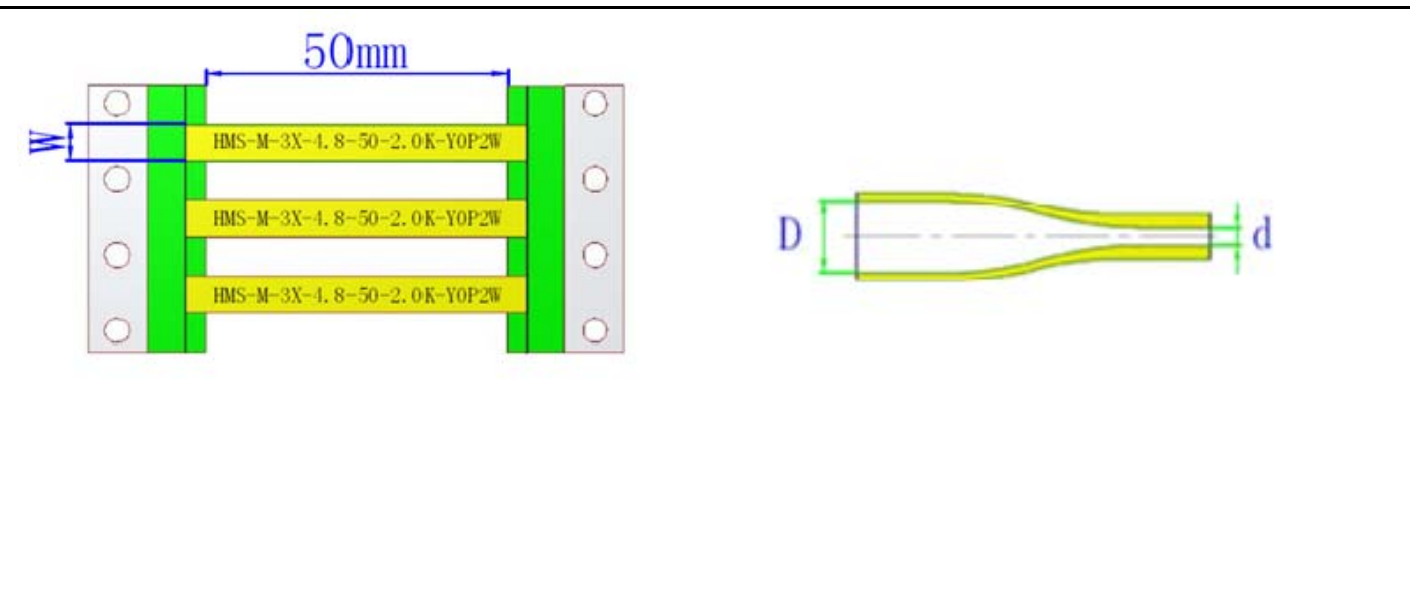
- High temperature resistant, rated temperature 135°C;
- High reliability, permanent identification;
- Heat sensitive, swift shrinking;
- Computerized printing, fonts at your disposal;
- Meets: AMS-DTL-23053/6 Class 1, NF F 00608 Categories A&H, SAE-AS 81531, MIL-STD-202F/215J, UL224, RoHS etc.



Technical Data

Material	The sleeving shall be fabricated from irradiated, thermally stabilized and flame retarded modified polyolefin compound
Application range	Military industry; Aerospace & defense; Marine;
Operating temperature range	-55---+135℃
Minimum recovery temperature	+120℃
Maximum storage temperature	+50℃
Shrink ratio	2:1, 3:1
Color	White, Yellow, other color is available if ordered
Printing mode	Single sided printing and Double sided printing formats available
Supplied mode	Either Continuous type or Ladder format type is available
Recommended Printers	Either Thermal transfer printer or Laser printer is OK.
Recommended Ribbons	WO-80500BK resin ribbon, Black, 100mm(width)*300m(length)

Product Dimensions (mm/inch)



BH-HMS Shrink ratio-2X

Part Number	As Supplied (mm)			After Recovery(mm)	
	ID(D)	Flatten Width(w)	Double Wall Thickness	ID(d)	Single Wall Thickness
BH-HMS-M-2X-1.6-50-2.5K-Y0P0O	2.00±0.20	3.7±0.3	0.48±0.10	≤0.79	0.45±0.06
BH-HMS-M-2X-2.4-50-2.5K-Y0P0O	2.79±0.20	5.0±0.3	0.48±0.10	≤1.18	0.49±0.06
BH-HMS-M-2X-3.2-50-2.0K-Y0P0O	3.64±0.23	6.3±0.4	0.48±0.10	≤1.59	0.51±0.06
BH-HMS-M-2X-4.8-50-2.0K-Y0P0O	5.26±0.25	8.9±0.4	0.49±0.10	≤2.36	0.54±0.06
BH-HMS-M-2X-6.4-50-1.5K-Y0P0O	6.92±0.28	11.5±0.4	0.50±0.10	≤3.18	0.56±0.06
BH-HMS-M-2X-9.5-50-1.0K-Y0P0O	10.2±0.32	16.7±0.5	0.51±0.11	≤4.75	0.59±0.06
BH-HMS-M-2X-12.7-50-1.0K-Y0P0O	13.5±0.36	21.8±0.6	0.52±0.11	≤6.35	0.60±0.07
BH-HMS-M-2X-19-50-0.5K-Y0P0O	20.1±0.40	32.2±0.6	0.53±0.11	≤9.53	0.62±0.07
BH-HMS-M-2X-25-50-0.5K-Y0P0O	26.7±0.45	42.5±0.7	0.55±0.12	≤12.7	0.63±0.07
BH-HMS-M-2X-38-50-0.5K-Y0P0O	39.8±0.51	63.2±0.8	0.57±0.12	≤19.1	0.64±0.07
BH-HMS-M-2X-51-50-0.25K-Y0P0O	53.0±0.56	83.9±0.9	0.58±0.13	≤25.4	0.64±0.08
BH-HMS-M-2X-76-50-0.25K-Y0P0O	79.4±0.56	125.3±1.0	0.59±0.13	≤38.1	0.64±0.09

BH-HMS Shrink ratio-3X

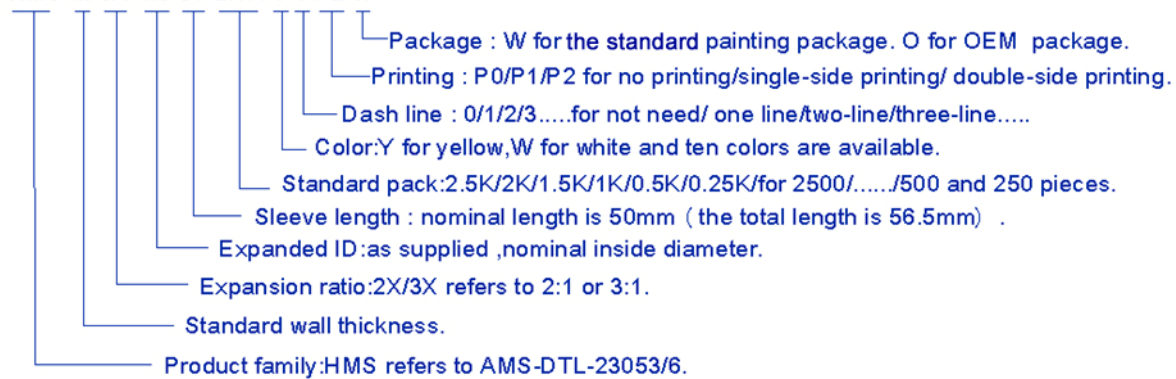
Part Number	As Supplied (mm)			After Recovery(mm)	
	ID(D)	Flatten Width(w)	Double Wall Thickness	ID(d)	Single Wall Thickness
BH-HMS-M-3X-1.6-50-2.5K-Y0P0O	2.00±0.20	3.7±0.3	0.47±0.10	≤0.53	0.52±0.06
BH-HMS-M-3X-2.4-50-2.5K-Y0P0O	2.79±0.20	5.0±0.3	0.47±0.10	≤0.79	0.57±0.06
BH-HMS-M-3X-3.2-50-2.0K-Y0P0O	3.64±0.23	6.3±0.4	0.48±0.10	≤1.06	0.61±0.06
BH-HMS-M-3X-4.8-50-2.0K-Y0P0O	5.26±0.25	8.9±0.4	0.49±0.10	≤1.59	0.67±0.06
BH-HMS-M-3X-6.4-50-1.5K-Y0P0O	6.92±0.28	11.5±0.4	0.50±0.10	≤2.36	0.71±0.06
BH-HMS-M-3X-9.5-50-1.0K-Y0P0O	10.2±0.32	16.7±0.5	0.52±0.11	≤3.18	0.77±0.06
BH-HMS-M-3X-12.7-50-1.0K-Y0P0O	13.5±0.36	21.8±0.6	0.53±0.11	≤4.75	0.80±0.07
BH-HMS-M-3X-19-50-0.5K-Y0P0O	20.1±0.40	32.2±0.6	0.55±0.11	≤6.35	0.84±0.07
BH-HMS-M-3X-25-50-0.5K-Y0P0O	26.7±0.45	42.5±0.7	0.56±0.12	≤8.47	0.86±0.07
BH-HMS-M-3X-38-50-0.5K-Y0P0O	39.8±0.51	63.2±0.8	0.57±0.12	≤12.9	0.89±0.07
BH-HMS-M-3X-51-50-0.25K-Y0P0O	53.0±0.56	83.9±0.9	0.57±0.13	≤17.2	0.90±0.08
BH-HMS-M-3X-76-50-0.25K-Y0P0O	79.4±0.56	125.3±1.0	0.57±0.13	≤25.8	0.92±0.09

Package information

Ordering Size (BH-HMS-M-2X/3X)	Ladder Format Type	Continuous Type	
	A&B-Small Box Packing (PCS/Box)	A-Paper reel Packing (m/reel)	B-Plastic reel Packing(m/reel)
Φ1.6	2500	50	25
Φ2.4	2500	50	25
Φ3.2	2000	100	25
Φ4.8	2000	100	25
Φ6.4	2000	100	25
Φ9.5	1000	100	25
Φ12.7	1000	100	25
Φ19	500	100	25
Φ25	500	100	25
Φ38	500	50	25
Φ51	250	50	25
Φ76	250	50	—

Part Number System:

HMS-M-3X-4.8-50-2.0K-Y 0 P2 W



Color code	BL	Br	R	Or	Y	G	Blu	V	Gr	W
Color	Black	Brown	Red	Orange	Yellow	Green	Blue	Violet	Grey	White

Note: Yellow and white are standard, other color is available if ordered.